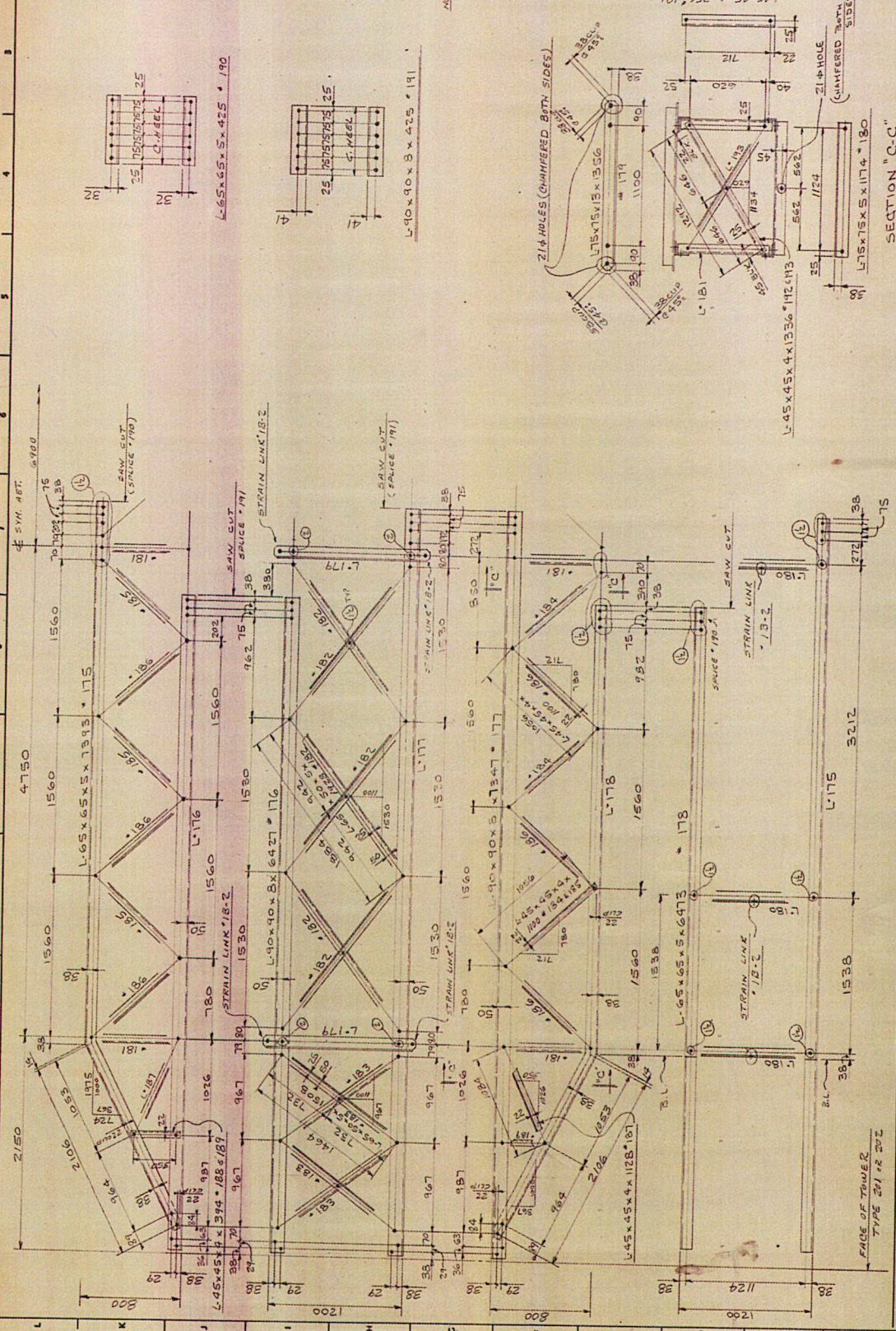


BILL OF MATERIAL FOR ONE UNIT		
NO.	DESCRIPTION	QUANTITY
1	ANGLE L	1.00
2	ANGLE L	1.00
3	ANGLE L	1.00
4	ANGLE L	1.00
5	ANGLE L	1.00
6	ANGLE L	1.00
7	ANGLE L	1.00
8	ANGLE L	1.00
9	ANGLE L	1.00
10	ANGLE L	1.00
11	ANGLE L	1.00
12	ANGLE L	1.00
13	ANGLE L	1.00
14	ANGLE L	1.00
15	ANGLE L	1.00
16	ANGLE L	1.00
17	ANGLE L	1.00
18	ANGLE L	1.00
19	ANGLE L	1.00
20	ANGLE L	1.00
21	ANGLE L	1.00
22	ANGLE L	1.00
23	ANGLE L	1.00
24	ANGLE L	1.00
25	ANGLE L	1.00
26	ANGLE L	1.00
27	ANGLE L	1.00
28	ANGLE L	1.00
29	ANGLE L	1.00
30	ANGLE L	1.00
31	ANGLE L	1.00
32	ANGLE L	1.00
33	ANGLE L	1.00
34	ANGLE L	1.00
35	ANGLE L	1.00
36	ANGLE L	1.00
37	ANGLE L	1.00
38	ANGLE L	1.00
39	ANGLE L	1.00
40	ANGLE L	1.00
41	ANGLE L	1.00
42	ANGLE L	1.00
43	ANGLE L	1.00
44	ANGLE L	1.00
45	ANGLE L	1.00
46	ANGLE L	1.00
47	ANGLE L	1.00
48	ANGLE L	1.00
49	ANGLE L	1.00
50	ANGLE L	1.00
51	ANGLE L	1.00
52	ANGLE L	1.00
53	ANGLE L	1.00
54	ANGLE L	1.00
55	ANGLE L	1.00
56	ANGLE L	1.00
57	ANGLE L	1.00
58	ANGLE L	1.00
59	ANGLE L	1.00
60	ANGLE L	1.00
61	ANGLE L	1.00
62	ANGLE L	1.00
63	ANGLE L	1.00
64	ANGLE L	1.00
65	ANGLE L	1.00
66	ANGLE L	1.00
67	ANGLE L	1.00
68	ANGLE L	1.00
69	ANGLE L	1.00
70	ANGLE L	1.00
71	ANGLE L	1.00
72	ANGLE L	1.00
73	ANGLE L	1.00
74	ANGLE L	1.00
75	ANGLE L	1.00
76	ANGLE L	1.00
77	ANGLE L	1.00
78	ANGLE L	1.00
79	ANGLE L	1.00
80	ANGLE L	1.00
81	ANGLE L	1.00
82	ANGLE L	1.00
83	ANGLE L	1.00
84	ANGLE L	1.00
85	ANGLE L	1.00
86	ANGLE L	1.00
87	ANGLE L	1.00
88	ANGLE L	1.00
89	ANGLE L	1.00
90	ANGLE L	1.00
91	ANGLE L	1.00
92	ANGLE L	1.00
93	ANGLE L	1.00
94	ANGLE L	1.00
95	ANGLE L	1.00
96	ANGLE L	1.00
97	ANGLE L	1.00
98	ANGLE L	1.00
99	ANGLE L	1.00
100	ANGLE L	1.00

NOTE:
ALL DIMS. 5/8" x 1/4" UNLESS NOTED.



PREP ALL MAT'L WITH LETTER "505"

PYLONEX INC

24426

ACRES INTERNATIONAL LIMITED
TORONTO CANADA

THE EAST AFRICAN POWER AND LIGHTING COMPANY LTD

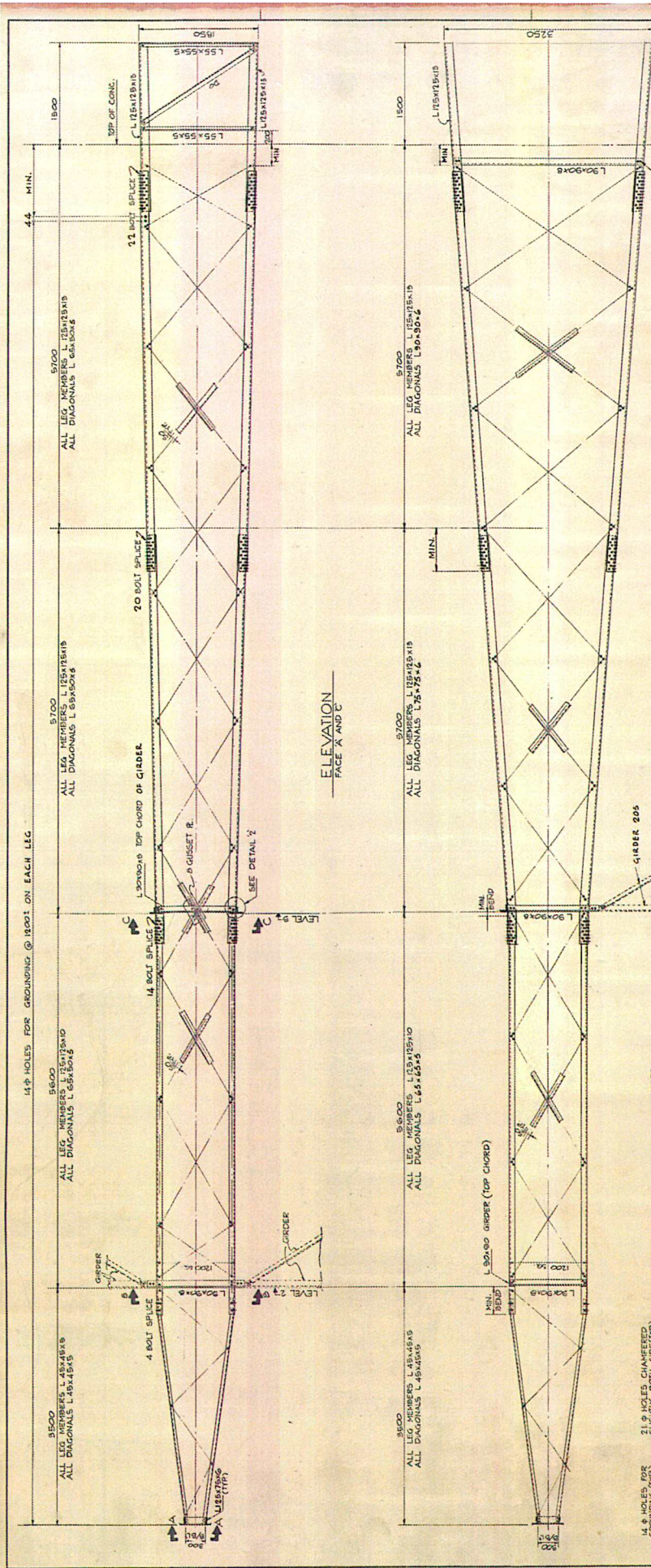
220KV STEEL STRUCTURE
BUS GANTRY GIRDER TYPE 203
DETAILS & ERECTION

REV. NO. 8/1754 DWG. NO. 1754-10A

NO.	DATE	BY	CHK	APP	REVISION
1					
2					
3					
4					
5					
6					
7					
8					
9					
10					
11					
12					
13					

FACE OF TOWER
TYPE 201 & 202

REFERENCE DRAWINGS

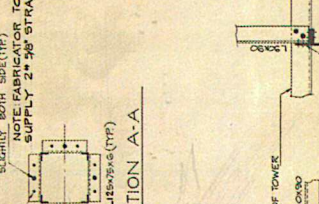
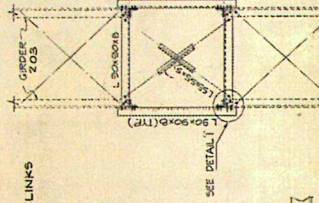
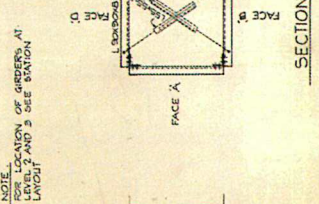
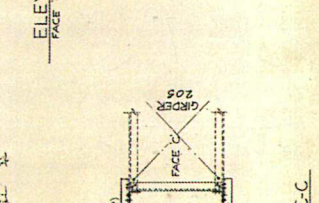
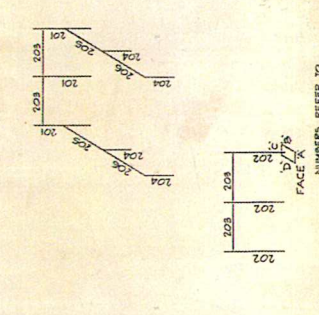


24395

MATERIALS
 STEEL TO BE CSA GRADE 300 W.
 MINIMUM YIELD STRENGTH 300 MPa.
 ALL WELDS TO BE FULL PENETRATION BUTT JOINTS.
 ALL BOLTS TO BE 11/16" DIA. UNLESS NOTED.
 ALL STEEL TO BE HOT DIP GALVANIZED TO CSA G16.

REFERENCE DIM'S.
 LINE GANTRY GIRDER (TYPE 105)
 GIRDER (TYPE 205)
 BUS GANTRY 5352-O-920-A1-205

NOTE
 ALL MARK NOS. TO BE PREFIXED BY 901.



AS BUILT

AGRIUM INTERNATIONAL LIMITED
 2720 N STEEL STRUCTURES
 LINE GANTRY TOWER
 STEEL DESIGN

DATE: 15/02/19
 DRAWING NO: 9352-O-920-A1-201

REVISIONS:
 1. AS BUILT
 2. FOR FABRICATION
 3. FOR ERECTION

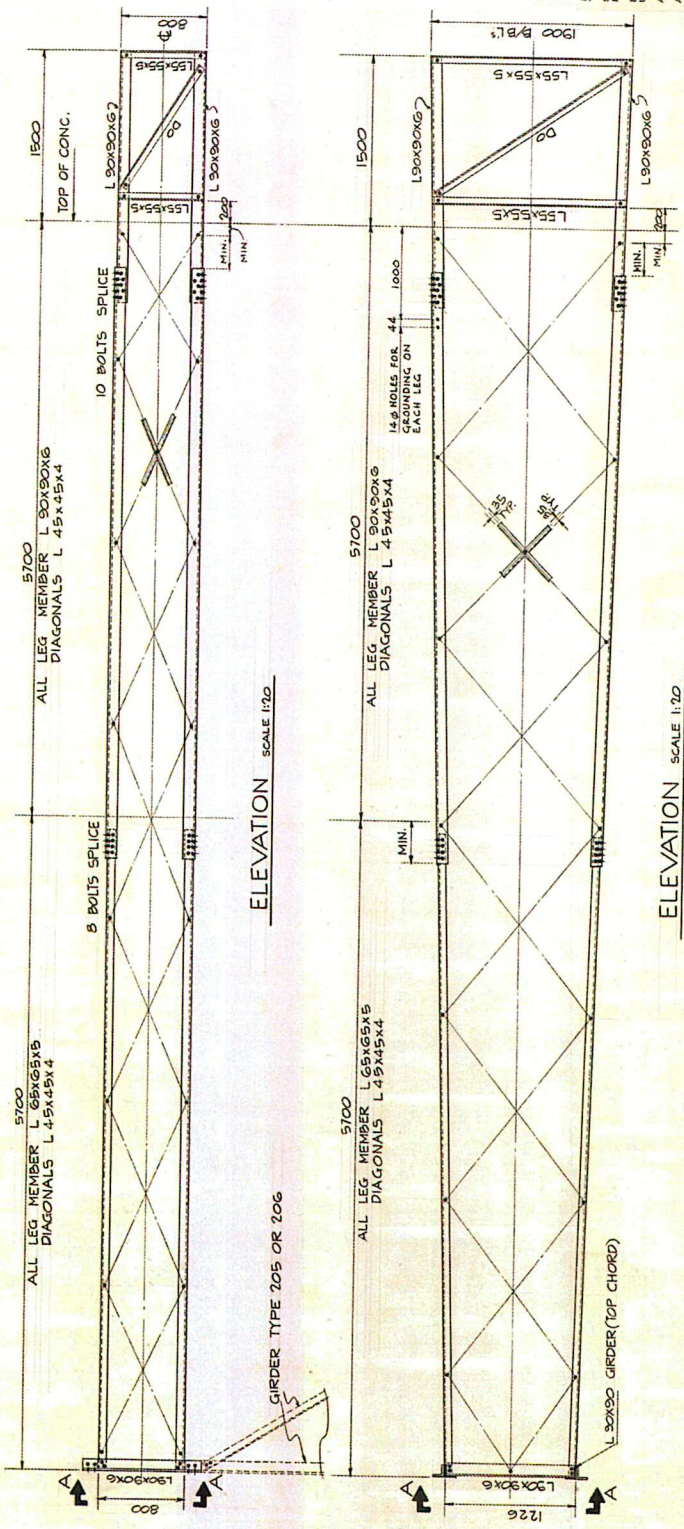
DESIGNED BY: [Signature]
 CHECKED BY: [Signature]
 DRAWN BY: [Signature]

STRUCTURE TYPE: 201

REFERENCE DRAWINGS:
 5352-3-300-A-000
 5352-3-300-A-001
 5352-3-300-A-002
 5352-3-300-A-003

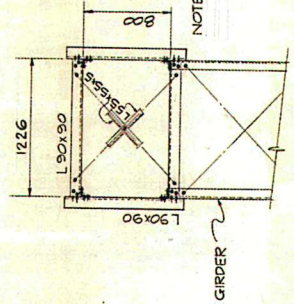
GENERAL ARRANGEMENT
 DANFORTH S.S. - GENERAL ARRANGEMENT

NOTE:
 ALLOWABLE SUBSTITUTIONS IF METRIC SIZES ARE USED:
 L 125 x 75 x 6 - L 125 x 75 x 6
 L 150 x 150 x 8 - L 150 x 150 x 8
 L 175 x 175 x 10 - L 175 x 175 x 10
 L 200 x 200 x 12 - L 200 x 200 x 12
 L 225 x 225 x 14 - L 225 x 225 x 14
 L 250 x 250 x 16 - L 250 x 250 x 16
 L 275 x 275 x 18 - L 275 x 275 x 18
 L 300 x 300 x 20 - L 300 x 300 x 20



ELEVATION SCALE 1:20

ELEVATION SCALE 1:20



SECTION A-A SCALE 1:20

NOTE
ALLOWABLE SUBSTITUTIONS IF METRIC SIZES ARE UNAVAILABLE
 L 114 x 114 x 1/8
 L 127 x 127 x 3/8
 L 127 x 127 x 1/2
 L 127 x 127 x 3/4
 L 127 x 127 x 1/2
 L 127 x 127 x 3/4
 L 127 x 127 x 1/2
 L 127 x 127 x 3/4

NOTE
ALL MARK NOS. TO BE PREFIXED BY 504.
 MATERIALS
 STEEL TO BE CSA G40.21M GRADE 300 W, MINIMUM YIELD STRENGTH 300 MPa.
 BOLTS TO BE TO CSA B324 GRADE 2, 16 mm (5/8") DIA. UNLESS NOTED, WITH HEX HEAD & NUT, & WASHER.
 ALL HOLES 16 mm (5/8") DIA. UNLESS NOTED.
 ALL STEEL TO BE HOT DIP GALVANIZED TO CSA G184.

REFERENCE DRAWINGS:
 5582-1-300-00-001 PABAT T.E. - GENERAL ARRANGEMENT
 5582-1-300-00-002 PABAT T.E. - GENERAL ARRANGEMENT
 5582-1-300-00-003 PABAT T.E. - GENERAL ARRANGEMENT
 5582-1-300-00-004 PABAT T.E. - GENERAL ARRANGEMENT
 5582-1-300-00-005 PABAT T.E. - GENERAL ARRANGEMENT

24398

5582-1-300-00-001	AP EUILT	AS
5582-1-300-00-002	ISSUED FOR FABRICATION	AS
5582-1-300-00-003	ISSUED FOR FABRICATION	AS
5582-1-300-00-004	ISSUED FOR FABRICATION	AS
5582-1-300-00-005	ISSUED FOR FABRICATION	AS

AS BUILT

ACRES INTERNATIONAL LIMITED
 TORONTO, CANADA

THE EAST AFRICAN POWER AND LIGHTING COMPANY LTD

220 kV STEEL STRUCTURES
 BUS GANTRY TOWER
 STEEL DESIGN

DATE: 81.02.19
 DRAWN: 11:20
 STRUCTURE TYPE: 204

APPROVED: [Signature]

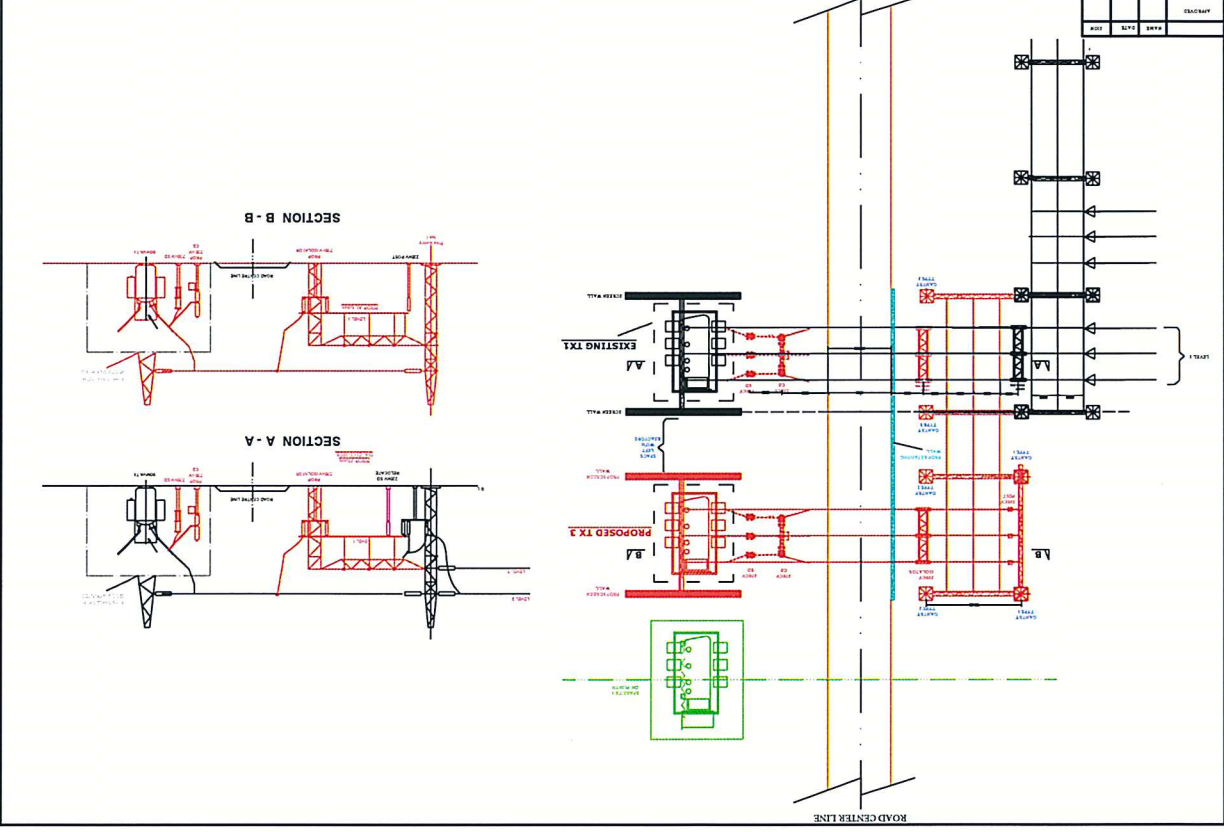
DESIGNED BY: [Signature]

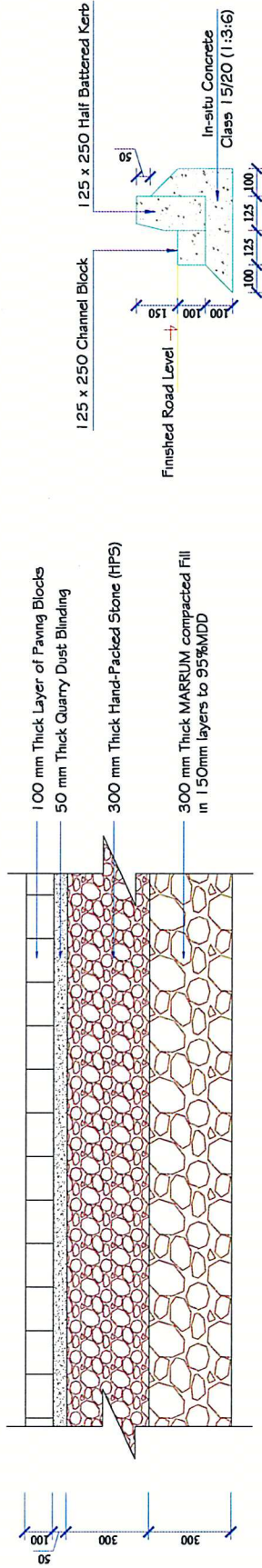
REV: 1

SK No. 0792/A
K. P. & L. Co. Ltd

RABAI 220/132-3RD 90MVA TX - MOMBASA

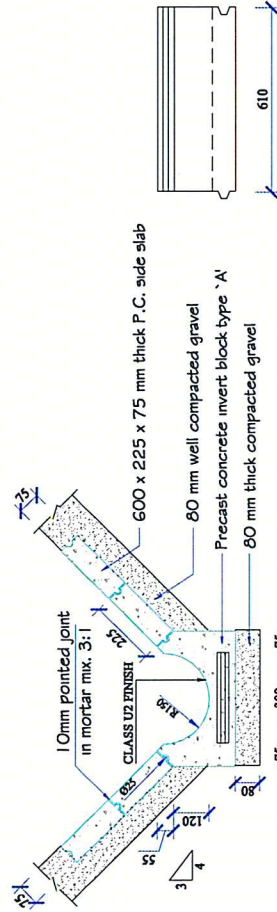
NO.	REVISION	DATE	BY	CHECKED	DATE





ROAD SECTION DETAIL
(Scale 1:25)

KERB AND CHANNEL
(Scale 1:25)



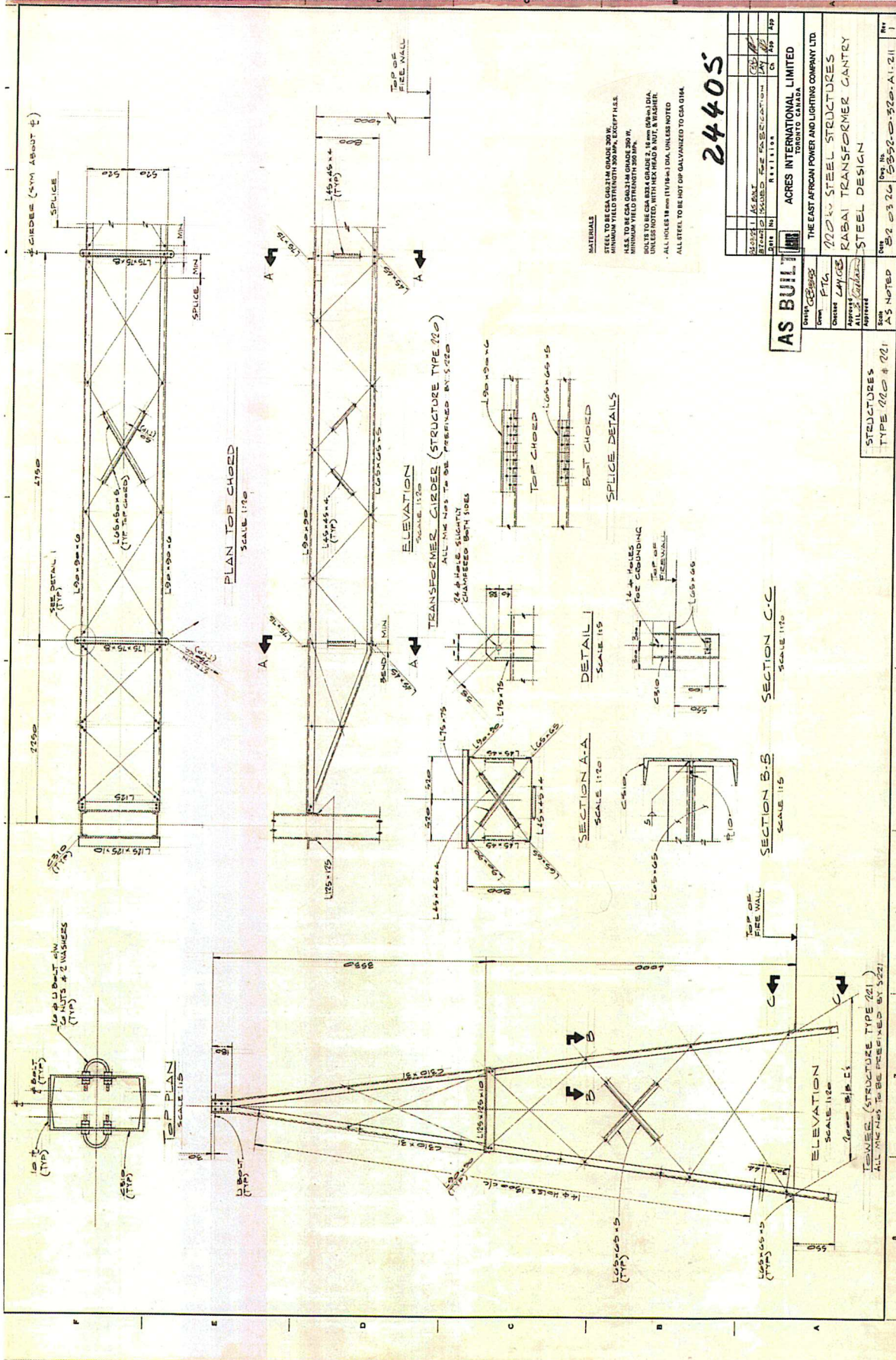
END ELEVATION

SIDE ELEVATION

INVERT BLOCK DRAIN TYPE 'A' ASSEMBLY DETAIL
(Scale 1:25)

APPROVED	NAME	DATE	SIGN
DESIGNED	D. JAWANSI		
CHECKED	D. JAWANSI		
DESIGNED	D. JAWANSI		
CHECKED	D. JAWANSI		
DESIGNED	D. JAWANSI		
CHECKED	D. JAWANSI		
DESIGNED	D. JAWANSI		
CHECKED	D. JAWANSI		
DESIGNED	D. JAWANSI		
CHECKED	D. JAWANSI		

REV	REVISION	DATE	SIGN	CREATED	DATE



MATERIALS
 STEEL TO BE CSA G40.21M GRADE 300W.
 MINIMUM YIELD STRENGTH 300 MPa, EXCEPT F15E.
 MINIMUM TENSILE STRENGTH 450 MPa, EXCEPT F15E.
 MINIMUM WELD STRENGTH 300 MPa, EXCEPT F15E.
 BOLTS TO BE CSA A307 GRADE 2, 1/2" DIA. UNLESS NOTED.
 NUTS TO BE CSA A307 GRADE 2, 1/2" DIA. UNLESS NOTED.
 WASHERS TO BE CSA A307 GRADE 2, 1/2" DIA. UNLESS NOTED.
 ALL STEEL TO BE HOT DIP GALVANIZED TO CSA 014.

24405

NO.	DATE	BY	CHECKED	APPROVED
1	1982-03-26
2	1982-03-26
3	1982-03-26
4	1982-03-26
5	1982-03-26
6	1982-03-26
7	1982-03-26
8	1982-03-26
9	1982-03-26
10	1982-03-26

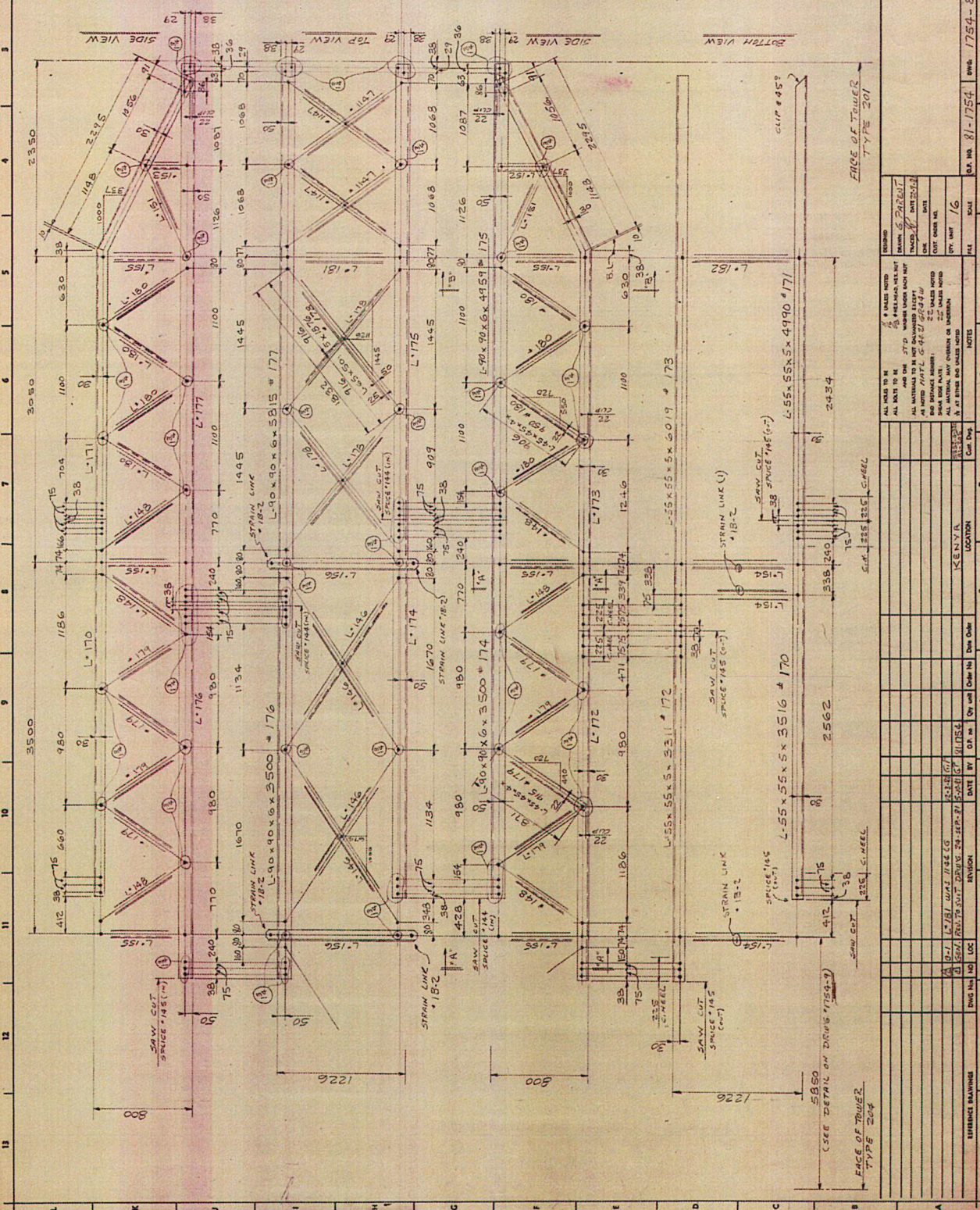
AS BUILT

ACRES INTERNATIONAL LIMITED
 TORONTO CANADA
 THE EAST AFRICAN POWER AND LIGHTING COMPANY LTD
 RABAI TRANSFORMER GANTRY
 STEEL DESIGN

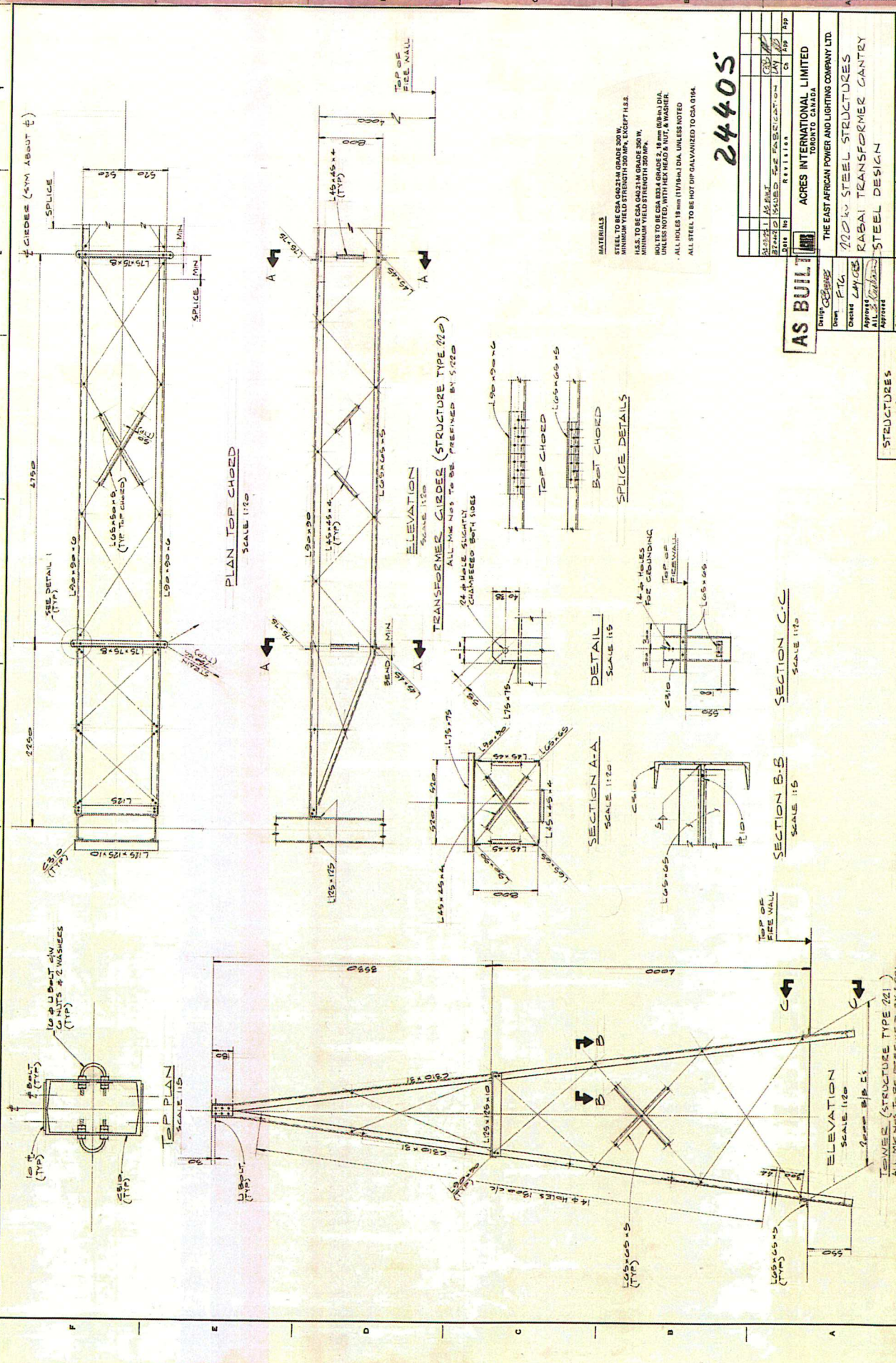
STRUCTURES
 TYPE 210 # 221

NO. 108 23 26 3398-0-320-A1.211

BILL OF MATERIAL FOR ONE UNIT		NO.		DESCRIPTION		QUANTITY		UNIT	
153	1	1	1	1	1	1	1	1	1
154	1	1	1	1	1	1	1	1	1
155	1	1	1	1	1	1	1	1	1
156	1	1	1	1	1	1	1	1	1
157	1	1	1	1	1	1	1	1	1
158	1	1	1	1	1	1	1	1	1
159	1	1	1	1	1	1	1	1	1
160	1	1	1	1	1	1	1	1	1
161	1	1	1	1	1	1	1	1	1
162	1	1	1	1	1	1	1	1	1
163	1	1	1	1	1	1	1	1	1
164	1	1	1	1	1	1	1	1	1
165	1	1	1	1	1	1	1	1	1
166	1	1	1	1	1	1	1	1	1
167	1	1	1	1	1	1	1	1	1
168	1	1	1	1	1	1	1	1	1
169	1	1	1	1	1	1	1	1	1
170	1	1	1	1	1	1	1	1	1
171	1	1	1	1	1	1	1	1	1
172	1	1	1	1	1	1	1	1	1
173	1	1	1	1	1	1	1	1	1
174	1	1	1	1	1	1	1	1	1
175	1	1	1	1	1	1	1	1	1
176	1	1	1	1	1	1	1	1	1
177	1	1	1	1	1	1	1	1	1



NO.	DESCRIPTION	QUANTITY	UNIT
1	1	1	1
2	1	1	1
3	1	1	1
4	1	1	1
5	1	1	1
6	1	1	1
7	1	1	1
8	1	1	1
9	1	1	1
10	1	1	1
11	1	1	1
12	1	1	1
13	1	1	1
14	1	1	1
15	1	1	1
16	1	1	1
17	1	1	1
18	1	1	1
19	1	1	1
20	1	1	1
21	1	1	1
22	1	1	1
23	1	1	1
24	1	1	1
25	1	1	1
26	1	1	1
27	1	1	1
28	1	1	1
29	1	1	1
30	1	1	1
31	1	1	1
32	1	1	1
33	1	1	1
34	1	1	1
35	1	1	1
36	1	1	1
37	1	1	1
38	1	1	1
39	1	1	1
40	1	1	1
41	1	1	1
42	1	1	1
43	1	1	1
44	1	1	1
45	1	1	1
46	1	1	1
47	1	1	1
48	1	1	1
49	1	1	1
50	1	1	1



MATERIALS
 STEEL TO BE CSA G40.21M GRADE 300W
 MINIMUM YIELD STRENGTH 300 MPa, EXCEPT H.S.S.
 H.S.S. TO BE CSA G40.21M GRADE 300W
 MINIMUM YIELD STRENGTH 300 MPa
 BOLTS TO BE CSA B33.4 GRADE 2, 16 mm (5/8") DIA.
 UNLESS NOTED, WITH HEX HEAD & NUT, & WASHER.
 ALL HOLES 18 mm (1 1/8") DIA. UNLESS NOTED
 ALL STEEL TO BE HOT DIP GALVANIZED TO CSA 0184.

2440S

REVISED	DATE	BY	CHK
1	10/12/11	SM	SM
2	10/12/11	SM	SM
3	10/12/11	SM	SM
4	10/12/11	SM	SM
5	10/12/11	SM	SM
6	10/12/11	SM	SM
7	10/12/11	SM	SM
8	10/12/11	SM	SM
9	10/12/11	SM	SM
10	10/12/11	SM	SM
11	10/12/11	SM	SM
12	10/12/11	SM	SM
13	10/12/11	SM	SM
14	10/12/11	SM	SM
15	10/12/11	SM	SM
16	10/12/11	SM	SM
17	10/12/11	SM	SM
18	10/12/11	SM	SM
19	10/12/11	SM	SM
20	10/12/11	SM	SM
21	10/12/11	SM	SM
22	10/12/11	SM	SM
23	10/12/11	SM	SM
24	10/12/11	SM	SM
25	10/12/11	SM	SM
26	10/12/11	SM	SM
27	10/12/11	SM	SM
28	10/12/11	SM	SM
29	10/12/11	SM	SM
30	10/12/11	SM	SM
31	10/12/11	SM	SM
32	10/12/11	SM	SM
33	10/12/11	SM	SM
34	10/12/11	SM	SM
35	10/12/11	SM	SM
36	10/12/11	SM	SM
37	10/12/11	SM	SM
38	10/12/11	SM	SM
39	10/12/11	SM	SM
40	10/12/11	SM	SM
41	10/12/11	SM	SM
42	10/12/11	SM	SM
43	10/12/11	SM	SM
44	10/12/11	SM	SM
45	10/12/11	SM	SM
46	10/12/11	SM	SM
47	10/12/11	SM	SM
48	10/12/11	SM	SM
49	10/12/11	SM	SM
50	10/12/11	SM	SM
51	10/12/11	SM	SM
52	10/12/11	SM	SM
53	10/12/11	SM	SM
54	10/12/11	SM	SM
55	10/12/11	SM	SM
56	10/12/11	SM	SM
57	10/12/11	SM	SM
58	10/12/11	SM	SM
59	10/12/11	SM	SM
60	10/12/11	SM	SM
61	10/12/11	SM	SM
62	10/12/11	SM	SM
63	10/12/11	SM	SM
64	10/12/11	SM	SM
65	10/12/11	SM	SM
66	10/12/11	SM	SM
67	10/12/11	SM	SM
68	10/12/11	SM	SM
69	10/12/11	SM	SM
70	10/12/11	SM	SM
71	10/12/11	SM	SM
72	10/12/11	SM	SM
73	10/12/11	SM	SM
74	10/12/11	SM	SM
75	10/12/11	SM	SM
76	10/12/11	SM	SM
77	10/12/11	SM	SM
78	10/12/11	SM	SM
79	10/12/11	SM	SM
80	10/12/11	SM	SM
81	10/12/11	SM	SM
82	10/12/11	SM	SM
83	10/12/11	SM	SM
84	10/12/11	SM	SM
85	10/12/11	SM	SM
86	10/12/11	SM	SM
87	10/12/11	SM	SM
88	10/12/11	SM	SM
89	10/12/11	SM	SM
90	10/12/11	SM	SM
91	10/12/11	SM	SM
92	10/12/11	SM	SM
93	10/12/11	SM	SM
94	10/12/11	SM	SM
95	10/12/11	SM	SM
96	10/12/11	SM	SM
97	10/12/11	SM	SM
98	10/12/11	SM	SM
99	10/12/11	SM	SM
100	10/12/11	SM	SM

AS BUILT

Drawn: P.T.C.
 Checked: L.H.C.
 Approved: A.L.S.
 ALL DIMS TO BE PREDEFINED BY S.221

STRUCTURES
 TYPE 221 & 221

DATE: 02.03.2011
 DRAWING NO: 2440S-D-520-A1-211

ACRES INTERNATIONAL LIMITED
 TORONTO CANADA

THE EAST AFRICAN POWER AND LIGHTING COMPANY LTD
 TORONTO CANADA

2200 STEEL STRUCTURES
 RASAI TRANSFORMER GANTRY
 STEEL DESIGN

DATE: 02.03.2011
 DRAWING NO: 2440S-D-520-A1-211